

MegaLauncher (VIP) v.3.2.

(English version)

Megasoft2000 Ltd.

Palm Software Division (PSD).

Platform: Palm OS 3.0, 3.1, 3.3, 3.5, 4.0

Program description.

MegaLauncher is the professional, multifunctional program that includes all the main operations to control the whole system of your device. Easy settable and user-friendly interface allows optimizing your work with this program in short terms.

Installation.

MegaLauncher_En.prc - the English version for all devices with the format 160x160

MegaLauncher_En_HiRes.prc - the English version for Sony Clie with the format 320x320

MegaLauncher_De.prc - the German version for all devices with the format 160x160

MegaLauncher_De_HiRes.prc - the German version for Sony Clie with the format 320x320

MegaLauncher_Fr.prc - the French version for all devices with the format 160x160

MegaLauncher_Fr_HiRes.prc - the French version for Sony Clie with the format 320x320

MegaLauncher_Tw.prc - the Chinese version for all devices with the format 160x160

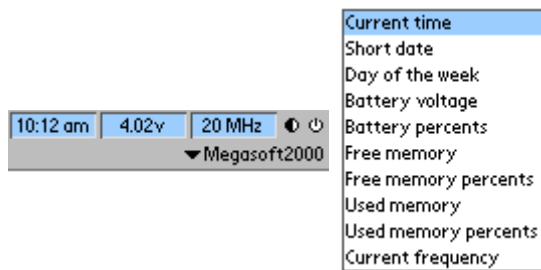
MegaLauncher_Tw_HiRes.prc - the Chinese version for Sony Clie with the format 320x320

Install MegaLauncher (VIP) as follows:

1. Select the application required for your device and your language .
2. Copy the MegaL.prc files to your desktop computer.
3. Install the software by using the Palm's Install Tool program.
4. Run a HotSync operation from your Palm computer. MegaLauncher will be transferred from your desktop computer to your Palm computer.

System description.

Upper panel:



The three upper digital windows contain the main information. When tapping any of these windows, the menu to select the information that will be indicated in it later on appears in this window. All the three windows can be configured.

"Megasoft2000" is the current category now.

Categories:

Tap the category line (Megasoft2000) to open the list of all the registered categories. To make changes tap the "Edit categories..." button.

To perform any operation on a category select this category.

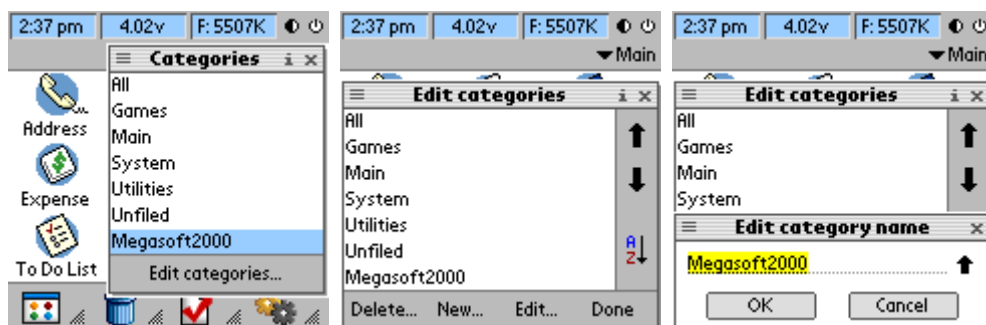
Delete... - Delete the category.

New... - Create the new category.

Edit... - Edit the category.

A/Z - Sort the categories in the list by name.

Two arrows (up and down) allow placing the selected category in the required line in the category list.



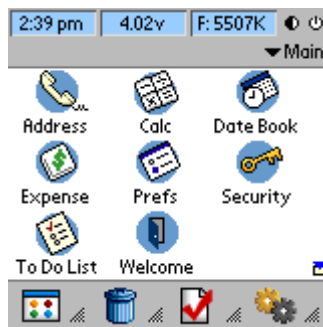
You can also use "Drag and Drop" function to change the category for the certain application. To do this, pull any application to the upper key of the current category and select in the category menu the category where you want the application to be transferred.

Lower panel:

Lower panel consists of 4 icon groups. In real time 4 icons from each group are available. To change the current icon tap "☐" button to the right of the current icon and select the required icon that will remain current in this group.



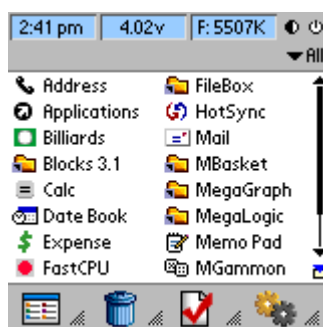
Large icons view:



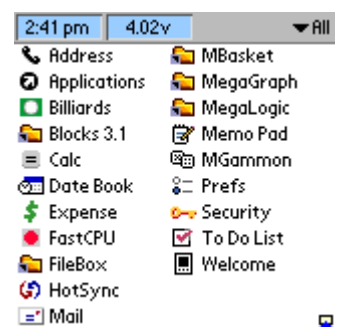
This mode allows to display both the system information and 9 icons on the screen at a time.
To delete the lower panel and show 12 icons on the screen automatically, tap the "☐" symbol.



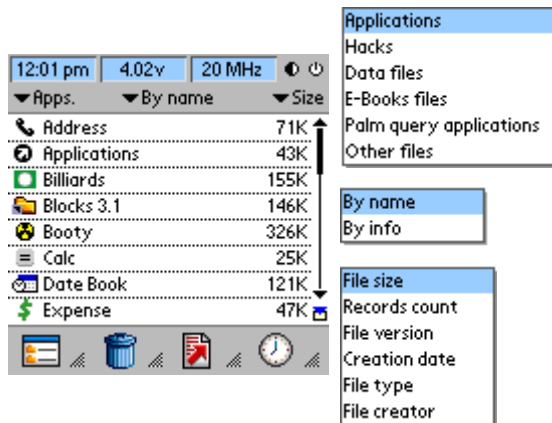
Small icons view:



This mode allows to display both the system information and 16 icons on the screen at a time.
To delete the lower panel and show 22 icons on the screen automatically, tap the "☐" symbol.



Advanced view:

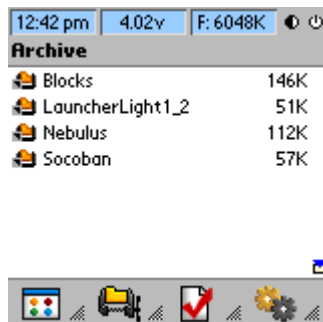


When tapping the "Apps" button the menu, where you can set a filter on the suggested groups, appears.

When tapping the "By name" button, you can sort the list by name or by information type.

Tap the "Size" button to sort by characteristics, suggested in a menu.

Archive:

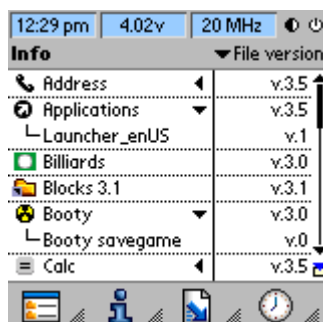


To place the application to this category you can use the "drag-and-drop" function in the direction to the lower panel or "touch-and-wait" function, that is to tap and hold the icon of the chosen application.

You can place some applications you will probably need some time later into the Archive category. All the applications in this category are compressed. This option enables you to use your memory in the most effective way. Tap the application to restore it from the Archive. Then it will be restored in the "Unfiled" category.

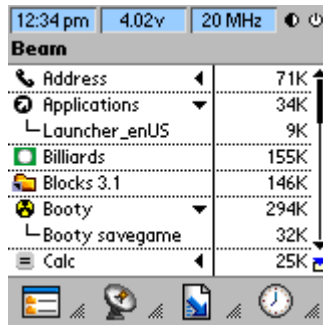
To delete all the files from this category go to: **Menu icon/Options/Remove all from archive.**

Info:



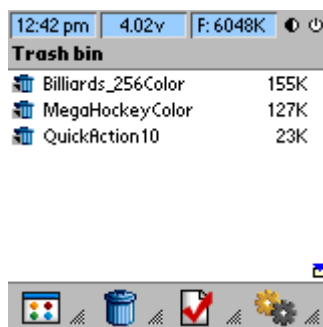
Information list about all applications and database. Tap the "◀" symbol to open the database list of this application. Tap the "File version" button to select the different information of this list displaying.

Beam:



The aim of this list is to transfer applications and their bases to another Palm device. Tap the "◀" symbol to open the database list of this application. After tapping any application or base the "Beam" operation starts.

Trash bin:

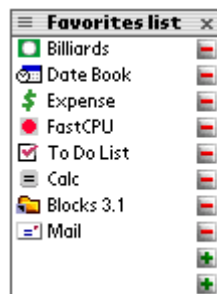


To place the application to this category you can use the "drag-and-drop" function in the direction to the lower panel or "touch-and-wait" function, that is to tap and hold the icon of the chosen application.

You have a choice when deleting. You can delete the application or move it to the Trash bin. All the applications moved to this category can be restored. Tap the needed application to restore it in the "Unfiled" category.

To delete all the applications from this category go to: **Menu icon/Options/Remove all from trash bin**

Favorites list:



You can place your favorite 10 applications in this list. To add a new application, tap the "+" symbol in a required line. You don't delete the application from the system when delete it from this list.

Recent list:



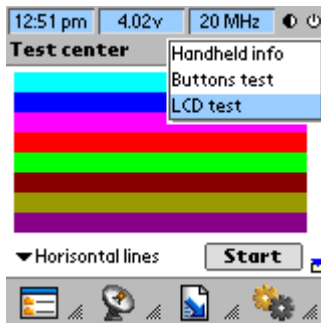
In this list the 10 most frequently used applications are registered automatically. This information is statistical and allows starting the application in the quickest way.

Common list:



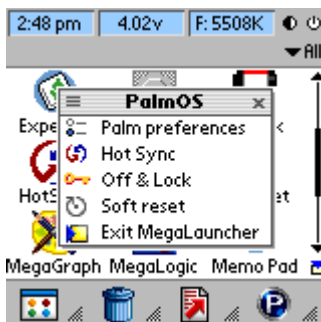
In this list 10 applications used last are registered automatically. This information is statistical and allows starting the application in the quickest way.

Test center:



Test center allows testing the screen quality of your device and control buttons. All the useful information about your device is held in "Handheld info" category.

PalmOS:

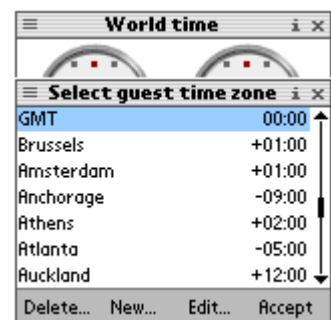


Here are the most popular and widely used Palm OS applications. In order to revert to MegaLauncher after these applications starting press the "Appl" key (it is situated left to "Graffiti" field). In order to exit from the MegaLauncher program select the menu item "Exit MegaLauncher".

World time:



Graphic clock allows you to set two cities at a time. In order to change the current city press the button with the key-top marking of the city and select the required city in the "Select city" menu. You can delete, add new or edit the existent cities in this list.

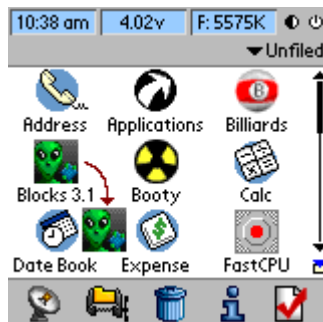


Application operations:



With any application icon pressed and held the “Touch and Wait” function is activated automatically. It allows to delete, archive, rename or transfer the selected application to another device. In this box you can activate the selected application or change the category. The “Touch and Wait” function is an alternative for “Drag and Drop”.

Drag-and-drop function:

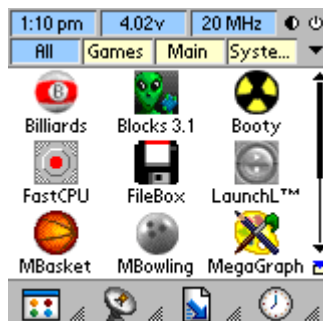


Tap any application and move to the lower panel. The new functional panel will appear:

- Beam
- Archive
- Trash bin
- Info
- Favorites

To complete the operation, drop the application on the required icon.

“Tabs view” mode:

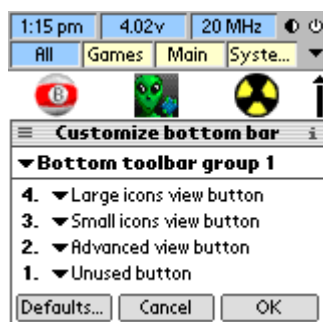


(Menu icon/Options/Preferences/Category view mode).

To open the whole category list press the “triangle” symbol in the left part of categories To change the application category use “Drag and Drop” function and pull the icon to the category where you want to move the application.



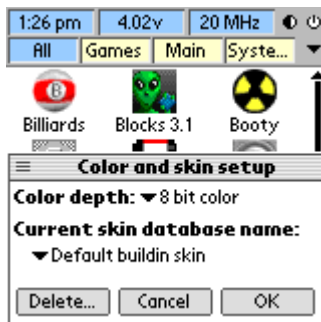
Customize bottom bar:



(Menu icon/Options/Customize bottom bar).

Customizing the lower panel is held in this window. "Bottom toolbar group 1" - is the left column. You can change the icons and their place in this column. The icon under number "1" will be the lowest in the group. Accordingly, number "4" - the top one. Note. The same 2 icons can't be placed in one column.

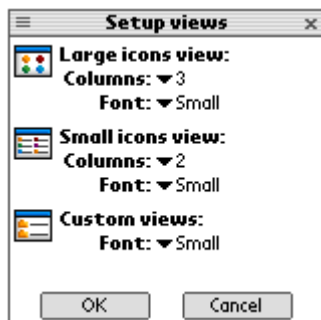
Color and skin setup:



(Menu icon/Options/Color and skin setup).

Color depth: Here you can set the color depth for your device. Note. In most cases MegaLauncher distinguishes your device and sets this parameter automatically.

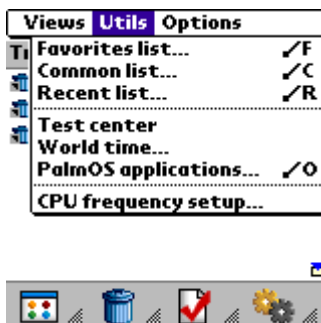
Setup views:



(Menu icon/Options/Setup views).

This menu allows setting the required amount of columns for large and small icons.

Restore hash database:



(Menu icon/Utils/Restore hash database).

This function is used only with SD/MMC memory cards and other.

Example: after setting the SD/MMC, you create the new category where you group some of the applications from this card. After that you delete both the card and the category. Now, if you set the card again, all the applications from this card will be in the "All" category only. In this case use this function to restore the initial structure.

Deleting MegaLauncher program:

Select "**PalmOS**" and press "Exit MegaLauncher" menu item. Delete the MegaLauncher program.

Free usage of the MegaLauncher program is limited by time (14 days).

If you want to buy it address to: <http://www.megasoft2000.com>

We will appreciate all your remarks and comments that can be addressed to: support@megasoft2000.com

This program is written by: Maxim Shumilov & Arthur Asloyan.
All rights reserved. Megasoft2000 1999 - 2001 (c).