





# Fizz Weather 2

## User Manual

<b>Introduction - Fizz Weather 2 .....</b>	<b>3</b>
<b>Installing - Fizz Weather 2.....</b>	<b>3</b>
<b>Un-installing - Fizz Weather 2.....</b>	<b>4</b>
<b>Launching - Fizz Weather 2.....</b>	<b>4</b>
<b>Registering - Fizz Weather 2.....</b>	<b>4</b>
<b>Weather Reports.....</b>	<b>5</b>
Options menu.....	5
City List .....	5
Current City> Fetch.....	7
Current City>Fetch Selected .....	7
All Cities> Fetch... ..	7
All Cities>Fetch Selected.....	7
Change Selected Reports .....	7
Clear Forecast .....	7
<b>Airports .....</b>	<b>10</b>
<b>Ski Reports .....</b>	<b>11</b>
<b>Weather Warnings .....</b>	<b>11</b>
<b>Options.....</b>	<b>11</b>
Home Screen.....	12
Downloads .....	12
Tracking .....	13
<b>Fizz Weather 2 Homescreen Plug-in.....</b>	<b>14</b>

## Introduction - Fizz Weather 2

Fizz weather is the ultimate weather package for your mobile device. Packed with features so that you will never be caught out by mother nature again.

Installed with an initial database of over 250 global cities, you can search our database of over 58,000 global cities and add your own.

- 7 day full forecasts
- 2 day forecasts - split into 6 hour intervals
- \*\* Current conditions with reports from various reporting weather stations
- Weather maps with zoom & pan support.
- Ski Reports from hundreds of popular global resorts
- Airport delays
- Weather warnings for the US
- Customizable interface with amazing new graphics and skins
- Full VGA and QVGA capability for compatible devices
- Full control of downloads, update your weather whenever and however you want
- Active Sync Synchronization
- Graphical display to allow you to track your downloads
- Customizable Today screen

Support for English, French, German, Italian, Spanish & Dutch

\*\* Some cities may only have a single reporting station.

**Please note that this is generic document and covers both Smartphones and Pocket PC's. If you have a question that is not covered here, please contact [Support@fizzsoftware.com](mailto:Support@fizzsoftware.com) who will be happy to help you further.**



All weather data supplied by CustomWeather Inc  
[www.customweather.com](http://www.customweather.com)

## Installing Fizz Weather 2

- Unzip the downloaded file
- Double Click on setup.exe
- Follow the on-screen installer dialogs.
- Check your device and install either to your device or storage card
- Installation may take a little time, as there are a lot of files to install.

### Upgrading from a Previous Version of Fizz Weather

When you upgrade Fizz Weather, you will lose your previous settings..

If you have any issues with the installation, you may need to manually remove the Fizz Weather installation folder from your device manually. You will also need to manually remove fizzleweathersched.exe and fizzleweathertoday.dll (fizzleweatherhome.dll on Smartphones) from the Windows folder on your device.

### License Agreement

Please read and accept the license agreement before completing the installation of Fizz Weather 2

## Un-installing Fizz Weather 2

Before Uninstalling Fizz Weather 2 make sure that you have disabled the Today screen plugin (homescreen plugin on Smartphones). You can then either remove the product using Active sync (Add/Remove Programs) or remove the product via the device.

If you are removing the product because you have found an issue, please contact [support@fizzsoftware.com](mailto:support@fizzsoftware.com) first as we may be able to help you.

## Launching Fizz Weather 2

Once installed, Fizz Weather 2 will be available in the Programs list.

- Select the **Fizz Weather 2** icon from the Programs list
- Select your country's **flag** to select the desired language

You can change the language **Fizz Weather 2** runs in by using the options screen.

### Personal Data Files

**Fizz Weather 2** will create several files per city suffixed with **.dat** in the **Fizz Weather 2** installation folder on your device. These files are used by **Fizz Weather 2** to manage your personal settings and data. The fizzleweather.dat file created by earlier versions is not compatible with Fizz Weather 2.

If you want to backup your data please backup all files suffixed with **.dat**.

## Registering Fizz Weather 2

### Fizz Weather 2 Registration Information

**Fizz Weather 2** will function for 2 days before you are required to enter a valid registration code. You may register either by going to the Options screen and selecting Register from the Menu or by waiting until the trial expires in which case the only available option will be the registration screen.

To register, simply enter the **serial number** provided when you purchased the product.

*Make sure you enter the serial number exactly as shown, including the '-' characters. Make sure there are no special characters or spaces anywhere in the number, including at the end and make sure that the serial number you are using matches the product you are registering. If you are still having problems, make sure you have downloaded the correct version for your device. A Smartphone serial number will not work on a Pocket PC. You can check your device type at [www.fizzsoftware.com/help](http://www.fizzsoftware.com/help)*

Select **Done** to confirm and continue.

### Buy Online

You can now buy Fizz Weather 2 online using your PC or Mobile device. If you are using Fizz Weather 2 on your device, from the registration page use the Menu option, 'buy now'. You will be taken to our mobile online store. It's safe, secure and powered by WorldPay.

If you want to buy online using your PC, visit our site [www.fizzsoftware.com](http://www.fizzsoftware.com) and see our online store.

## Weather Reports

Fizz Weather allows you to see various weather reports. These can be selected by choosing the View Menu. Tap on the icon or press your action key to select it.

The available reports are:-

- Today Screen
- 7 Day – Full 7 day forecasts
- 2 Day – 48 hr forecast, split into 6hrly intervals
- Current – Current conditions
- Maps – Various maps including animated satellite maps and current conditions for your favourite cities
- Airport – Airport delays for all the most common airports, local to your favorite cities
- Ski – Snow and piste conditions for the most popular resorts worldwide

The 7day, 2 day and current conditions screen also allow you to see weather warning and alerts for the whole of the US. If a warning is present, a flashing triangle will appear on the top right icon. Tapping this will open a separate window which details the warning or alert. You can choose to turn the weather warnings off and on from the options screen.

## Options menu

All the Forecast screens share a similar options menu with the following options:

### City List



The first option is the City List, this allows you to choose your favorite cities, add new ones and edit the details of existing ones.

Initially this list contains 230 common cities, but you can add to this using the city lookup feature, which supports over 58,000 cities worldwide. To select or deselect a city from your favorites list, simply tap on the City with your stylus on the Pocket PC, or select the city using the navigation pad on Smartphones and press the Action key. Initially no cities are pre-selected.

There are 6 buttons at the bottom of the screen to allow you to manipulate the city database. The menu options are the same as the buttons. On Smartphones, you can choose all the options from the menu.

The first button toggles the selected state of the city.

**New City**

This button/menu option enables you to add a new city to the database. An important feature of Fizz Weather 2 is the Internet City Lookup, available when you add a new city to the database. This will ensure you not only have the correct city information but also allows you to fetch weather forecasts.

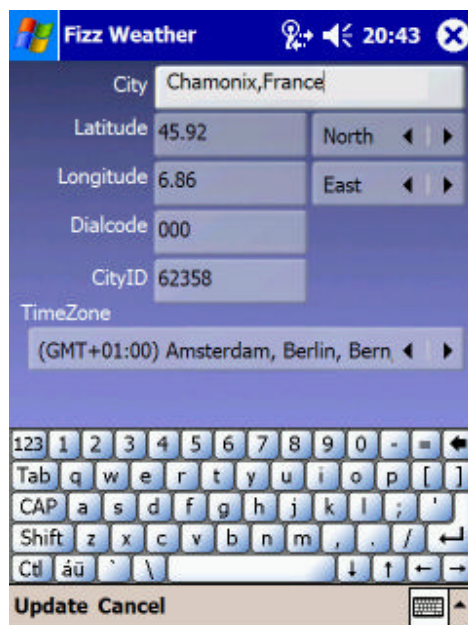
From the City list select New City from the MENU. Enter as much of the city name as possible and use the **Lookup...** option.

**If you live in the United States - you can enter a ZIP code.**

This will perform an Internet search for the city name entered and will return a list of matching cities. Tab down to the Results selector and scroll through the cities that have been found. You can also press the Action key to show the full list. When you find the correct city, select it and choose the Menu Select. This will take you to the City Information screen as described above, here you can check that all the details are correct and when you are happy, choose Update.



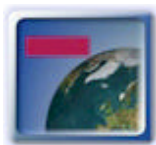
**Note:** The city time zone will be an estimate. You may need to configure this manually on the City Information screen.

**Edit City**

The city information screen is shown if you edit a city.

- **City** - The name of the city used in the city lists or displayed with the clocks.
- **Latitude / Longitude** - The cities global position. This will be used when displaying the city's location on the daylight/distance map. If you do not know it, see City Lookup below.
- **Dial code** - The cities international dial code.
- **City ID** - This is populated automatically by the lookup process. Please do not alter these numbers or weather forecasts for the city will not be correct.
- **Time zone** - The time zone for the city. This is the offset from GMT that will be used when showing the time or setting alarms for this city. When you add a city manually using the lookup, you need to check that the time zone is correct for your city.

Edit the city information and select update to update the city database.

**Delete City**

This allows you to delete a city from the database.



This button/menu option allows you to toggle between your currently selected favourite cities and the full city list.



This button (Pocket PC only) takes you out of the City Edit screen and back to the screen you were on before.

## Fahrenheit/Centigrade

This option allows you to toggle the temperature unit used between Fahrenheit and Centigrade

## Current City> Fetch...

This option allows you to immediately fetch currently selected forecast (ie. 7Day, 2 Day, Current, Maps, Airports, Ski) for the currently selected city only. When this option is selected, Fizz Weather will use whatever connection method is available to it. If you are connected to a PC via Active Sync and your options allow it, then this will be used, otherwise GPRS will be used.

## Current City>Fetch Selected

This option allows you to fetch all the reports that you have previously selected via the Options screen, but only for the current city.

## All Cities> Fetch...

This option allows you to immediately fetch the currently selected forecast for all your favourite cities

## All Cities>Fetch Selected

This option allows you to fetch all the reports that you have previously selected via the options screen, for all your favourite cities.

## Change Selected Reports

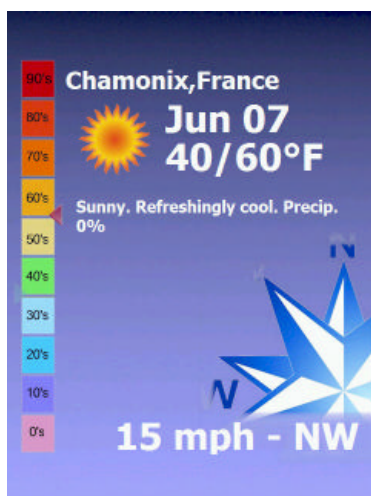
This option takes you to the options screen where you can edit your selected reports. For more details on this screen, see the Options section of this documentation.

## Clear Forecast

This option will clear the forecast for the currently selected city.



## Today Screen



This is the first screen that you see when you launch Fizz Weather 2; it displays the current forecast for today if one is available. The screen will 'scroll' through your favorite cities, fading between cities after a short interval. The information displayed is the city name, temperature, short description and wind speed. You can have this screen in Full Screen mode on the Pocket PC by selecting the Full Screen option from the menu or tapping the screen. You can use the left and right navigation keys to move manually through the selected cities.

When you first start Fizz Weather 2, you will not have any cities selected or weather downloaded. So you will need to select some cities first. The city list can be accessed from the options menu on this screen.

Choosing Fetch Forecast from the menu here will download the 7-Day report for all your current favorite cities.

## 7 Day Detailed



This is the 7 day detailed forecast screen. The city droplist at the top can be used to select one of your chosen favorite cities. If the city has a cached forecast it will be shown on screen. If no forecast is available, no report will be shown.

As you move through the days, using either your stylus or navigation pad (depending on device), the details for that day will appear at the top of your screen. The details shown include: -

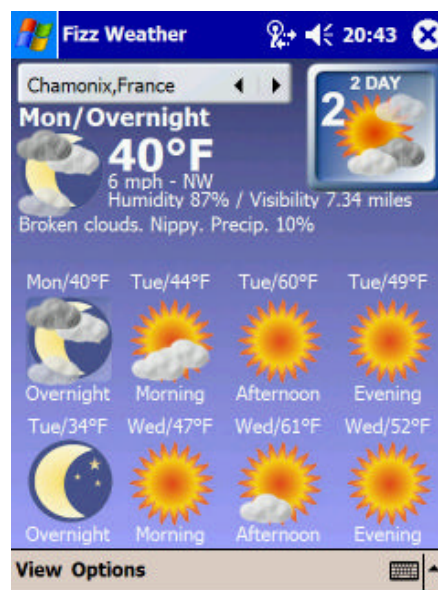
- Date
- Min/Max Temperature
- Wind Speed and direction
- Humidity
- UV Strength
- Detailed description
- Chance of precipitation

## 2 Day Forecast

This is the 48 hour forecast screen. The city droplist at the top can be used to select one of your chosen favorite cities. If the city has a cached forecast it will be shown on screen. If no forecast is available, no report will be shown.

The second droplist (Smartphone only) is for selecting the first 24 hours of the forecast or second 24 hours.

The information shown is in 6 hour intervals showing the conditions icon, temperature, precipitation percentage, wind speed and direction and humidity level.





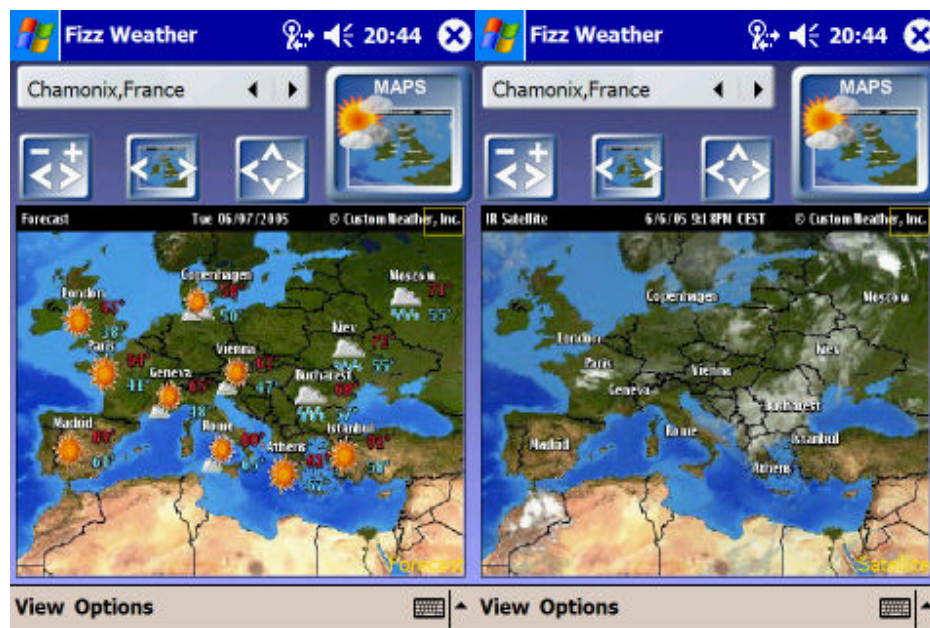
## Current Conditions



This is the current conditions screen. The city droplist at the top can be used to select one of your chosen favorite cities. If the city has a cached forecast it will be shown on screen. If no forecast is available, no report will be shown.

The second droplist is for selecting a weather reporting station. Some cities support more than one reporting weather station. Moving left and right on this droplist allows you to cycle through.

## Maps



This is the main forecast map screen. The city droplist at the top can be used to select one of your chosen favorite cities. If the city has a cached map it will be shown on screen. If no map is available, no report will be shown.

Using the buttons at the top of the screen you can manipulate which map to show and also how the map appears.

**Normal Mode** - Moving up and down on the d-pad forces the focus between the map and the droplist.



**Zoom** - This icon allows you to make the map bigger or smaller. On the Pocket PC, click the left arrow to zoom out and the right arrow to zoom in.



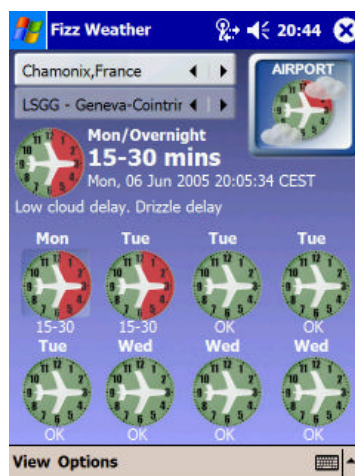
**Map Selection Pan Mode** – This icon allows you to select which map is displayed. The choices available are :-Current Conditions and Satellite (Animated satellite). When you have selected the satellite maps, you can choose Play from the menu to play the animation. On Pocket PC, you can tap the play icon.



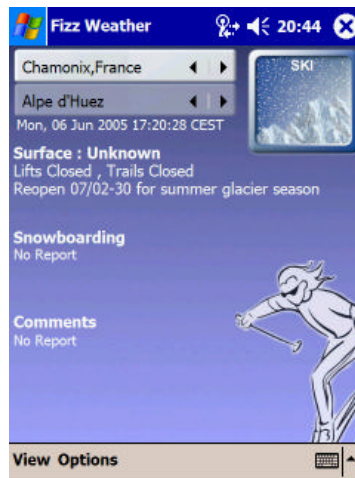
**Pan** - The navigation pad can be used to pan left/right/up/down across the image. Or on Pocket PC, the arrows on the button can be clicked to pan the image right/left/up/down.

A small map in the top right shows the current position of the on screen image in relation to the entire image.

## Airports



The airport delays screen will show the airports local to the selected city. Once you have selected the airport relevant to you and the delays have been fetched, you will see how the weather could affect the flights leaving or arriving at your chosen airport. If you move through the time intervals (6 hourly) the top of the screen will show the details of that delay if there is one. If there is no delay then No Delay will be displayed for that time interval.



## Ski Reports

Ski reports are available for most of the common resorts worldwide. If there are no ski reports available for the currently selected city, No Report will be displayed.

If ski reports are available you will see a second droplist containing all the resorts local to that city. The date and time that the report was last updated will be displayed along with the Surface details, which lifts are open, opening hours, snowboarding report if there is one and a general comments area.

## Weather Warnings

By default these are turned off. To switch them on, go to the options screen and select Downloads. Make sure that weather warnings are selected. When a warning exists for a city, it will appear as a flashing triangle in the top right of the 7 Day, 2 Day and Current Conditions screen. If you select the flashing triangle, the warning or alert for that city will be displayed. If there are multiple warnings for that city, you can scroll left and right to go through the various warnings.

Weather warnings are only currently available for US cities.

## Options

The options screen is split into several sections

- General options – Language, skins, text color, start screen and icon set
- Home Screen Options – How the homescreen plug-in is displayed on your device
- Downloads – Here you configure which forecasts are downloaded for your favorite cities and when
- Tracking – This allows you to see how much information you are downloading. This is useful to help you track your GPRS or wireless usage. Active Sync downloads are not tracked.

### General Options

#### Network

This option allows you to configure Fizz Traveller to match your device connection settings. The default is Automatic.

#### Units

Allows you to choose between Centigrade and km/h or Fahrenheit and mph.

#### Skin

This option allows you to choose the skin that Weather uses as its background image.



### Text Color

This option allows you to choose which text color is used throughout the application.

### Start Screen

This option allows you to configure which screen is the first one that you see when Fizz Weather 2 starts.

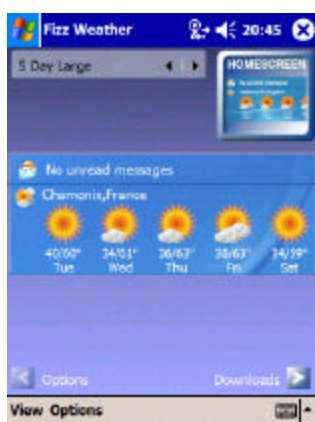
### Icon Set

This option allows you to choose which set of weather icons Fizz Weather 2 uses. At present there is only one to choose from, but others will be available in the future.

### Selector

This option allows you to choose between the old style scrolling selector and the new Icon based selector.

## Home Screen



This screen allows you to configure the homescreen plugin.

You can select the view mode using the droplist on the screen. The default is 5 Day large, the other options are 7Day small and 5Day small and Current condition. Once the view mode has been selected, you will see the graphic change to represent how the homescreen will look. Clicking on the city will change it, i.e. Cycle through your favorite cities. With the 5 day small forecast, you can choose how many cities to display at once. Again, clicking on the cities will change which ones are displayed. You can also choose to turn the home screen rotate option on and off from the menu on this screen. When it is on, the home screen plugin will rotate through your favorite cities.

## Downloads

This screen allows you to control when the weather is downloaded to your device and also which data is downloaded. When weather data is downloaded, the homescreen plugin is also updated.

The first droplist allows you to select how often you want the weather forecast updated. Under this you will see the time and date of the last scheduled update that successfully completed and the time and date of the next scheduled update.

The second droplist refers to automatic updates when you dock your device. If this is set to On, then every time you dock your device with Active Sync (and have a valid partnership set-up) then the selected reports for all your favorite cities will be updated.

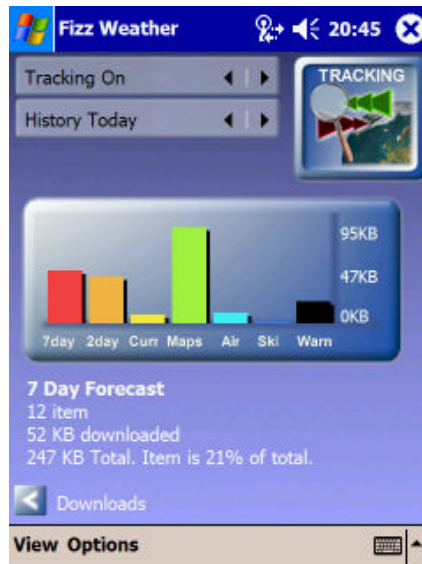
The third droplist allows you to choose when the scheduled updates should occur, the options are Always, in which case the weather will be downloaded at your chosen time interval regardless of your current connection ie. if your device is connected to your PC, then Active Sync will be used, otherwise GPRS will be used.

Only When Docked allows you to download the weather at the selected interval but only when the device is connected to your PC via Active Sync. This will save your GPRS usage. If you have your device set to download every hour only when docked, then every hour, the device will check to see if it is docked, if it is, then the weather will be updated, if not, then the timer will reset for the next hour.



The checkbox list shows which weather reports should be downloaded for any update. The selected reports will be downloaded for all your selected favorite cities. You can also choose to download weather warnings here. Weather warnings only apply to US cities, so this is switched off by default.

## Tracking



The tracking screen shows how much data has been downloaded to your device.

The first droplist allows you to turn tracking on and off. The second droplist shows you tracking data for the day, month, week, year or all.

Selecting the column of the graph you are interested in will show you the details for that column. The first figure is the number of times that the particular forecast has been downloaded. The second is the amount of data downloaded for that section and the final one is the total data downloaded for the selected period along with what percentage of that total the selected item actually is. You can use the stylus or keypad for selecting the graph columns.

Data is tracked for all downloads.





## Fizz Weather 2 Homescreen Plug-in

The Fizz Weather home screen plug-in is the ideal way to keep track of your favorite cities' weather conditions from your device home screen. The home screen will be localized in one of 5 languages, the same language you have chosen in Fizz Weather 2.

### ***Navigating and Using the Plug-in (Smartphone)***

You will need to have started Fizz Weather 2 at least once before the home screen plugin will show any information.

You need to select the plugin from the homescreen layout section of your Smartphone for it to be visible. To do this go to Settings/Home/Homescreen layout and choose Fizz Weather or Fizz Weather QVGA for QVGA devices.

### ***Navigating and Using the Plug-in (Pocket PC)***

The plug-in will be installed at the same time as Fizz Weather 2. To activate it you must launch Fizz Weather at least once. When you have done this, the plug-in will appear on your device Today screen by default, you can turn this off by going to Settings/Today and tapping the Items tab. Deselecting Fizz Weather will remove it from the Today screen. You can configure what you see on the homescreen from within Fizz Weather itself. Details of how to do this can be found above. When using the plugin, clicking on the cities will change the city displayed. Clicking on the top left icon will allow you to either launch weather or perform an immediate update. The update will cause the icon to pulsate to indicate that the update is occurring. This update will download all your selected reports for all your favorite cities, so may take some time. You can track downloads from the tracking screen found within Options.

#### **Additional Weather disclaimer**

ALL WEATHER DATA IS PROVIDED ON AN "AS IS," "AS AVAILABLE" BASIS. FIZZ SOFTWARE LTD. USING CUSTOM WEATHER DISCLAIMS ALL WARRANTIES, EXPRESS OR IMPLIED, INCLUDING ANY WARRANTIES OF ACCURACY, COMPLETENESS, CURRENTNESS, MERCHANTABILITY OR FITNESS FOR A PARTICULAR PURPOSE.